

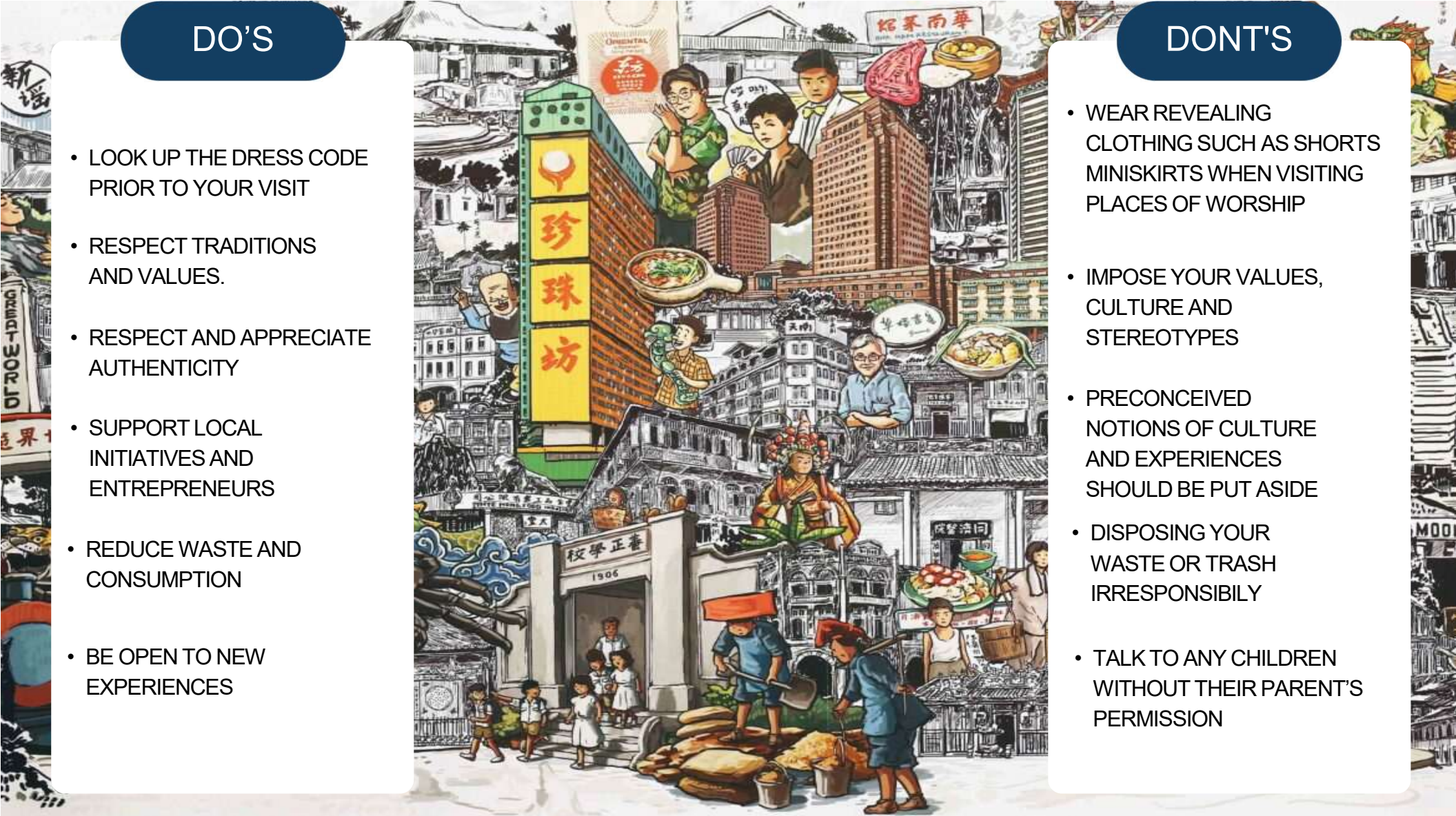
DO'S AND DON'TS AT
CULTURAL SITES:

VISIT CULTURAL SITES IN SINGAPORE



DO'S

- LOOK UP THE DRESS CODE PRIOR TO YOUR VISIT
- RESPECT TRADITIONS AND VALUES.
- RESPECT AND APPRECIATE AUTHENTICITY
- SUPPORT LOCAL INITIATIVES AND ENTREPRENEURS
- REDUCE WASTE AND CONSUMPTION
- BE OPEN TO NEW EXPERIENCES



DONT'S

- WEAR REVEALING CLOTHING SUCH AS SHORTS MINISKIRTS WHEN VISITING PLACES OF WORSHIP
- IMPOSE YOUR VALUES, CULTURE AND STEREOTYPES
- PRECONCEIVED NOTIONS OF CULTURE AND EXPERIENCES SHOULD BE PUT ASIDE
- DISPOSING YOUR WASTE OR TRASH IRRESPONSIBLY
- TALK TO ANY CHILDREN WITHOUT THEIR PARENT'S PERMISSION

SULTAN MOSQUE

THE LARGEST UNOFFICIAL
CENTRE OF WORSHIP FOR
LOCAL MUSLIMS, BUT VISITORS
ARE WELCOME TO ENTER
(EXCEPT DURING PRAYER
SERVICES, SO AVOID FRIDAYS)

LOOK FOR THE CURIOUS
FEATURES AT THE BASE OF THE
DOME, WHICH IS COMPOSED OF
MANY GLASS BOTTLES.

<https://www.timeout.com/singapore/things-to-do/sultan-mosque>



BUDDHA TOOTH RELIC TEMPLE AND MUSEUM

FOUNDED IN 2002 BY VENERABLE SHI FAZHAO, THIS 5-STOREY SERENE PLACE OF WORSHIP DEDICATED TO THE MAITREYA BUDDHA – THE COMPASSIONATE ONE – RESTS ONE OF BUDDHA'S SACRED BODY PARTS IN ITS ETHEREAL FORM, AS WELL AS MANY OTHER RELICS.

WORSHIPPERS, OR ANY INDIVIDUAL SEEKING TO ENLIGHTEN THEIR CURIOSITY CAN EMBARK ON TWO DIFFERENT MUSEUMS JOURNEYS, BOTH OF WHICH HIGHLIGHT AND SHOWCASE ASIAN BUDDHIST ARTIFACTS, ARTS AND CULTURE. THE BUDDHIST CULTURE MUSEUM AND SACRED RELIC CHAMBER, LOCATED ON THE THIRD FLOOR, IS OPEN DAILY FROM 9AM-6PM, WHILE THE EMINENT SANGHA MUSEUM ON THE MEZZANINE FLOOR IS OPEN DAILY FROM 7AM- 7PM.

<https://www.timeout.com/singapore/things-to-do/buddha-tooth-relic-temple-museum>



SRI MARIAMMAN TEMPLE

ODDLY ENOUGH, THE OLDEST HINDU TEMPLE IN SINGAPORE IS SMACK IN THE MIDDLE OF CHINATOWN. IT WAS BUILT (AS A HUMBLE SHED) IN 1827 BY NARAINA PILLAI, THE FIRST RECORDED INDIAN IMMIGRANT TO ENTER COLONISED SINGAPORE (HE TRAVELLED WITH RAFFLES FROM PENANG).

COMPLETED IN 1863, IT'S FAMOUS FOR ITS STAGGERINGLY DETAILED GOPURAM (TOWER GATEWAY). IT IS ALSO THE SITE OF THEEMIDHI, A REMARKABLE FIRE-WALKING CEREMONY HELD A WEEK BEFORE THE HINDU FESTIVAL DEEPAVALI, USUALLY IN OCTOBER. IF YOU WANT TO TAKE PHOTOS, YOU HAVE TO PAY \$3 (\$6 FOR VIDEO CAMERAS).

<https://www.timeout.com/singapore/things-to-do/sri-mariamman-temple>



CHIJMES

ONCE A CONVENT SCHOOL, CHIJMES HAS TRANSFORMED INTO A HIP LIFESTYLE ENCLAVE BRIMMING WITH BARS, CHIJMES HAS HOSTED MANY MEMORABLE WEDDING EVENTS AND CEREMONY FROM COUPLES LOCALLY AND ABROAD.

THE BACKDROP OF THE CHURCH SERVES AS A HOLY MATRIMONY FOR THE ESTEEMED GUEST AND FAMILIES OF THE BRIDE AND GROOM.

<https://www.timeout.com/singapore/things-to-do/chijmes>



VISIT OUR MUSEUM



DO'S

- Please consume all food and drink before entering the museum
- Be considerate and dispose of your rubbish in the bins provided
- Your safety is important to us
- Take photographs without flash
- Enjoy the artifacts and installations



DONT'S

- Food and drink are not permitted in the galleries, as this will attract ants and other pests
- Dispose your trash around the Museum or at undesignated spots
- Please do not lean on showcases as they may crack under pressure. Please refrain from rowdy behaviour in the Museum as you may cause injury to yourself or others
- strong lights may damage sensitive materials such as paper and textile. This is also why certain areas in the Museum are dimly lit
- Do not talk to children without their parent's permission

National Gallery Singapore



The former City Hall and Supreme Court buildings have been refurbished to become the National Gallery. It is the largest visual art gallery in Singapore, and mostly dedicated to local and South-East Asian art from the 19th century to today. Many of the works on display will be drawn from the National Collection.

Sixty-four thousand square metres, spread across two monumental buildings, with thousands of pieces of art on its walls. That's the scale of the National Gallery Singapore, which has finally flung its doors open after five years of renovation works. The culture vultures in us are already salivating. We picked our jaws off from the ground to hear more about the Gallery's grand plans from curator Adele Tan.

ArtScience Museum

The stunning lotus-shaped building is an iconic landmark in the Singapore skyline and also a place where art, science, culture and technology come together. The ArtScience Museum features 21 gallery spaces and since it opened in 2011, has seen large-scale exhibitions by some of the best artists in the world like Leonardo da Vinci, Salvador Dalí, M.C. Escher, Vincent Van Gogh and more. On the science spectrum, the museum has held significant exhibitions that explore aspects of science including big data, particle physics, paleontology, marine biology, cosmology and space exploration.

On top of that, the museum has staged international exhibitions in partnership with renowned museums and galleries from around the world including the British Museum and Science Museum in London; the American Museum of Natural History, New York; the Biblioteca Ambrosiana, Milan; the Mori Art Museum, Tokyo; the Australian Centre for Moving Image, Melbourne and many other institutions.

<https://www.timeout.com/singapore/art/artscience-museum>



FORT SILOSO

The main story of Japan's victory is punchily told, alongside displays on resistance hero Lim Bo Seng and Force 136, and on the local civilian experience during the Japanese occupation. Step into the Surrender Chambers containing exact waxwork replicas of the main players, which are surprisingly effective at reconstructing the British surrender of the Japanese, and vice versa. The main attraction, however, is the sprawling structure of the fort itself. Wander around the gun emplacements and underground tunnels at your own pace. Climb through tunnels and examine original guns, cannons, film clips and photographs from days past.



<https://www.timeout.com/singapore/things-to-do/fort-siloso>

DO'S AND DON'TS AT
TOURIST DESTINATION

VISIT LOCAL ATTRACTIONS



DO'S

- LOOK UP THE DRESS CODE PRIOR TO YOUR VISIT
- RESPECT TRADITIONS AND VALUES.
- RESPECT AND APPRECIATE AUTHENTICITY
- SUPPORT LOCAL INITIATIVES AND ENTREPRENEURS
- REDUCE WASTE AND CONSUMPTION
- BE OPEN TO NEW EXPERIENCES



DONT'S

- WEAR REVEALING CLOTHING SUCH AS SHORTS MINISKIRTS WHEN VISITING PLACES OF WORSHIP
- IMPOSE YOUR VALUES, CULTURE AND STEREOTYPES
- PRECONCEIVED NOTIONS OF CULTURE AND EXPERIENCES SHOULD BE PUT ASIDE
- DISPOSING YOUR WASTE OR TRASH IRRESPONSIBLY
- TALK TO ANY CHILDREN WITHOUT THEIR PARENT'S PERMISSION

NIGHT SAFARI

ONE OF SINGAPORE'S MOST FAMOUS AND POPULAR VISITOR ATTRACTIONS, THE OPEN-CONCEPT NIGHT ZOO SHOWS MORE THAN 900 NOCTURNAL ANIMALS IN THEIR NATURAL HABITAT. Set in lush secondary rainforest, this is a must-see. The world's first night zoo (opened in 1994) allows you to see what over 2500 nocturnal animals from 130 species get up to after dusk, in naturalistic habitats and without barriers, via the use of special lighting techniques.

To see the zoo, take a 50-minute tram ride: observe majestic lions gnawing on their meat dinners, coy mountain deer striking poses and, if you're lucky, a noisy rhino taking a bath. You can get off the tram at the designated point to follow four walking trails that let you get close to flying squirrels, dangling bats and a leopard or two. Last ride at about 11.20pm, but get there earlier.

The hourly Creatures of the Night show is worth a look, but the ethnic performances are a bit lame. Don't use flash if you're taking photos as it may scare the animals. The Night Safari gets a million visitors a year, most of whom seem to turn up at the weekend; go late at night during the week to have a quieter time.

<https://www.timeout.com/singapore/things-to-do/night-safari>



JEWEL CHANGI

NOT MANY AIRPORTS CAN BOAST OF BEING A MUST-SEE TOURIST DESTINATION IN THEIR OWN RIGHT. BUT [Jewel Changi](#)—Singapore Changi Airport's latest extension—certainly deserves the title.

An unparalleled fusion of design, architecture and lush nature,

this world-class lifestyle hub is the perfect way to experience Singapore's many charms. Here's a one-day guide to get you started!

HSBC RAIN VORTEX [LEVEL 1]
SHAW THEATRES JEWEL [BASEMENT 2]
VIOLET OON SINGAPORE [LEVEL 1]
STORES ACROSS JEWEL CHANGI
CANOPY PARK [LEVEL 5]
CLOUD9 PIAZZA [LEVEL 5]

<https://www.visitsingapore.com/singapore-itineraries/1-day-guide-to-jewel-changi/>



HAW PAR VILLA

BUILT IN 1937, HAW PAR VILLA, SINGAPORE'S LARGEST OUTDOOR ART GALLERY IS THE BRAINCHILD OF AW BOON HAW, THE MILLIONAIRE PHILANTHROPIST AND MARKETING EXTRAORDINAIRE WHO GIFTED THE WORLD TIGER BALM. The eclectic park is a treasure trove of Asian culture, history, philosophy and religion – quirky yet enlightening, at the same time. Since 2015, it has been managed by Journeys Pte Ltd, an award-winning heritage specialist passionate in preserving and bringing the heritage gem to greater heights.

<https://www.hawparvilla.sg/plan-your-visit/>



UNIVERSAL STUDIOS SINGAPORE

Battlestar Galactica

No matter how many planes you've flown on, your heart rate will always double at the mention of turbulence. But 'technical glitches' found on a rollercoaster – one that zooms at 90km/h, twists, turns and propels you over 14 storeys into the air ('Human') – takes that fear factor to a whole new level. Especially when the second track, where shoulder straps provide a (false?) sense of security, turns 360 degrees a couple of times and has your legs dangling in mid-air. Riding on 'Human' feels like you're being thrown into the skies.

According to one TOS staffer: 'You will die!'. While said in jest, the recent closing-for-repair of the ride makes a few minor bumps on board sound like a walk in the park. Tip: don't wear flip-flops or strapless sandals; do leave your belongings behind; and hold on tight, really tight.

Scare factor: 5/5

<https://www.timeout.com/singapore/things-to-do/universal-studios-singapore>



DO'S AND DON'TS AT
TOURIST SITES:

VISIT TOURIST SITES IN SINGAPORE



DO'S

- LOOK UP THE DRESS CODE PRIOR TO YOUR VISIT
- RESPECT TRADITIONS AND VALUES.
- RESPECT AND APPRECIATE AUTHENTICITY
- SUPPORT LOCAL INITIATIVES AND ENTREPRENEURS
- REDUCE WASTE AND CONSUMPTION
- BE OPEN TO NEW EXPERIENCES



DONT'S

- WEAR REVEALING CLOTHING SUCH AS SHORTS MINISKIRTS WHEN VISITING PLACES OF WORSHIP
- IMPOSE YOUR VALUES, CULTURE AND STEREOTYPES
- PRECONCEIVED NOTIONS OF CULTURE AND EXPERIENCES SHOULD BE PUT ASIDE
- DISPOSING YOUR WASTE OR TRASH IRRESPONSIBLY
- TALK TO ANY CHILDREN WITHOUT THEIR PARENT'S PERMISSION

SINGAPORE FLYER

AT 165 METRES TALL, SINGAPORE FLYER IS A MASTERPIECE OF URBAN ARCHITECTURE AND ENGINEERING THAT SHOWCASES NOT ONLY THE MESMERIZING COSMOPOLITAN CITYSCAPE OF THE TROPICAL LION CITY, BUT EVEN THE SURROUNDING ISLANDS OF INDONESIA AND PARTS OF MALAYSIA IN ALL THEIR GLORY.

IN ADDITION TO OFFERING PANORAMIC VIEWS OF SINGAPORE'S COSMOPOLITAN CITYSCAPE, GUESTS CAN ALSO INDULGE IN A FLUTE OF CHAMPAGNE, OR SAVOUR THE ICONIC SINGAPORE SLING WHILST HOSTED IN A SPECIAL THEMED CAPSULE. DINERS SEEKING BOTH PRIVACY AND LUXURY CAN OPT FOR A MULTI-SENSORY TREAT UNLIKE ANY OTHER WITH OUR PREMIUM SKY DINING FLIGHT, COMPLETE WITH A FOUR-COURSE DINNER AND AN IN-FLIGHT HOST.

https://www.tripadvisor.in/Attraction_Review-g294265-d678639-Reviews-Singapore_Flyer-Singapore.html

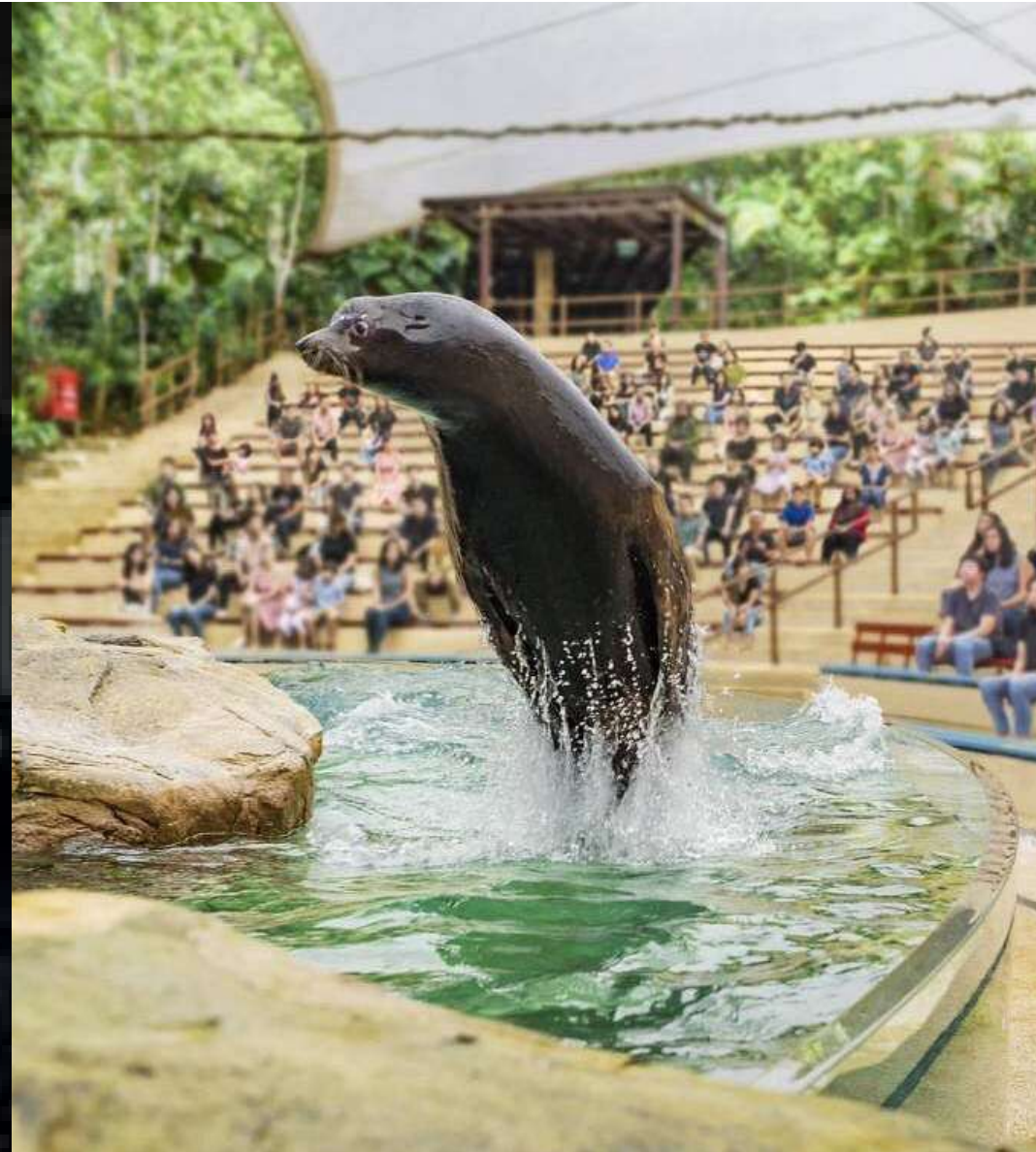


SINGAPORE ZOO

SET IN A RAINFOREST ENVIRONMENT, SINGAPORE ZOO IS HOME TO OVER 2,800 ANIMALS FROM OVER 300 SPECIES OF MAMMALS, BIRDS AND REPTILES. THE PARK ALSO BOASTS THE WORLD'S FIRST FREE-RANGING ORANG UTAN HABITAT IN A ZOO.

DELIGHT IN AN EXCITING OUTDOOR FEAST AT JUNGLE BREAKFAST WITH WILDLIFE, AN INTERNATIONALLY ACCLAIMED, AWARD-WINNING PROGRAMME THAT OFFERS EXHILARATING EXPERIENCE WITH ORANGUTANS. THE FUN IS ENDLESS WITH INTERESTING ANIMAL PRESENTATIONS, PHOTOGRAPHY WITH ANIMALS AND MORE!

https://www.tripadvisor.in/Attraction_Review-g294265-d324542-Reviews-Singapore_Zoo-Singapore.html



SUNGAI BULOH WETLAND RESERVE

DISCOVER THE BEAUTY AND WONDERS OF NATURE AT SINGAPORE'S FIRST ASEAN HERITAGE PARK. UNCOVER A WORLD FILLED WITH RICH BIODIVERSITY AS YOU WANDER THROUGH THE WETLANDS WITH AN EXTENSIVE MANGROVE FOREST OF SUNGEI BULOH WETLAND RESERVE.

Sungei Buloh was first opened as a Nature Park in 1993. In 2002, 130 hectares were officially gazetted as a Nature Reserve and renamed Sungei Buloh Wetland Reserve to better reflect its status.

In the same year, it was recognised as a site of international importance for migratory birds and awarded a certificate by Wetlands International, marking the reserve's formal entry into the East Asian Australasian Shorebird Site Network, which includes Australia's Kakadu National Park, China's Mai Po – Inner Deep Bay and Japan's Yatsu Tidal Flats. And in 2003, Sungei Buloh Wetland Reserve became Singapore's first ASEAN Heritage Park.

<https://www.nparks.gov.sg/gardens-parks-and-nature/parks-and-nature-reserves/sungei-buloh-wetland-reserve>



ESPLANADE

AFFECTIONATELY KNOWN AMONG LOCALS AS THE "DURIAN", ESPLANADE IS ONE OF THE BUSIEST ARTS CENTRES IN THE WORLD WITH ABOUT 3,000 PERFORMANCES PRESENTED YEARLY. SPOT OUR PRICKLY CLADDING IN THE MIDDLE OF THE CENTRAL ARTS AND CULTURAL DISTRICT, AND TAKE IN THE VIEW FROM THE MARINA BAY WATERFRONT WHERE OUR OUTDOOR THEATRE IS SITUATED.

COMING TO ESPLANADE MEANS THAT YOU'RE IN FOR A COMPLETE LIFESTYLE EXPERIENCE, FROM ENJOYING A NIGHT OUT AT A SHOW, TO SHOPPING AND DINING. AND WHETHER YOU'RE A FIRST-TIMER, AN ARDENT PATRON OR FELLOW ARTS LOVER, YOU'RE MOST WELCOME HERE AND WE'LL DO OUR BEST TO GIVE YOU A GREAT EXPERIENCE WITH THE ARTS.

https://www.tripadvisor.in/Attraction_Review-g294265-d324752-Reviews-Esplanade_Theatres_on_the_Bay-Singapore.html





**VISIT OUR
RESERVES &
NATURE
PARK**



DO'S AND DON'TS

Gardens - Parks - Nature Reserves



Stay on track



Don't go offtrack



**Show care and consideration
when using our park facilities**



**Vandalise, destroy,
abuse any facilities**



**Dispose waste in a proper
manner**



**Do not litter or
dispose your waste
irresponsibly**



Keep noise levels low



**Don't shout or
blast portable
speakers**



**Our Parks are smoke
free zone**



Do not smoke

Singapore Botanic Gardens



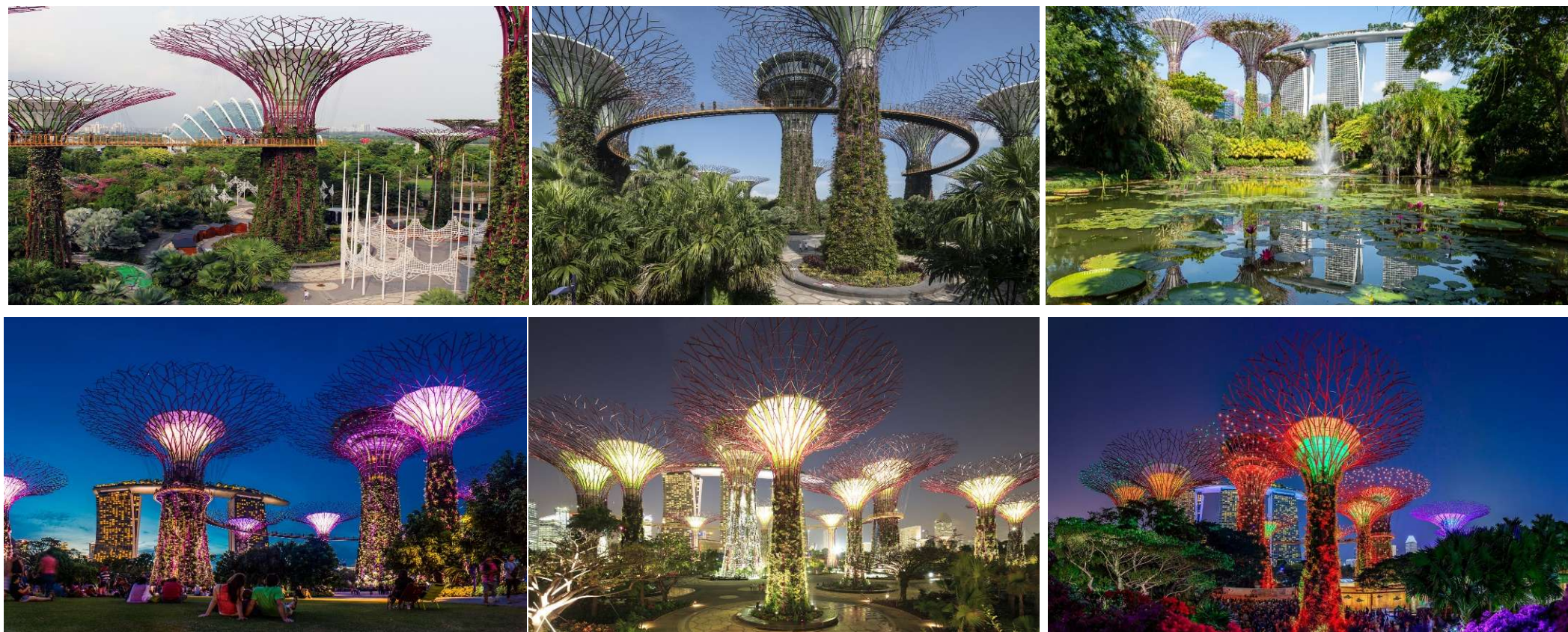
Established in 1859, the Gardens is a tranquil respite from the city buzz. This [UNESCO World Heritage Site](#) features attractions like a swan lake where visitors can feed the black Australian swans and the Evolution Garden.

Walk, a well-landscaped plot containing the fossilised remains of ancient trees. It's also home to the world's largest collection of orchids – some 1,000 species and 2,000 hybrids, plus the national flower, Vanda Miss Joaquim – at the National Orchid Garden.

During weekends, tours to its rainforest patch are available, while outdoor concerts are often held at Symphony Lake. And with the Jacob Ballas Children's Garden, where children can run wild and explore the farm, orchard, and forest which has its own stream and ponds, this nature spot is family-friendly.

Gardens by the Bay

Spanning 101 hectares, Gardens by the Bay comprises three waterfront gardens – Bay South, Bay East and Bay Central. Bay South, the largest at 54 hectares. Check out the Flower Dome and Cloud Forest conservatories for a cooled tour of the world's flora, as well as other attractions such as Floral Fantasy, OCBC Skyway, and the Supertree Observatory.



<https://www.timeout.com/singapore/things-to-do/gardens-by-the-bay>

Fort Canning Park



Singapore has a rich and storied history that dates far beyond the time Sir Stamford Raffles set foot on our shores. Fort Canning Park, a bastion of our colonial heritage, is also a great place to catch a glimpse into a time when ancient Malay kings ruled our land.

Visit the nine historical parks today to experience 14th century history, where Malayan princesses bathed in forbidden springs and ancient craftsmen plied their trade for the royal family. Fort Canning Park also saw the passage of British colonisation – Raffles built his residence here and established the first botanic gardens to stimulate agriculture in Singapore and the region. Its wartime history is no less fascinating, with evidence of the hill's time as an artillery fort complete with barracks, officers' quarters and underground bunkers.

Fort Canning Park has moved with the times. It has become a hotspot for various art and cultural events, with refreshed historical gardens for all to enjoy. Augmented reality trails via the BalikSG app and accessibility features make it easier than ever to appreciate the nature and heritage of the park. To help you along with your exploration, we pull together the best attractions of Fort Canning Park.

<https://www.timeout.com/singapore/things-to-do/the-ultimate-guide-to-fort-canning-park>



FEEDBACKS

Gardens - Parks - Nature Reserves

AVS/NParks investigates all alleged animal welfare and cruelty cases, including those on pet abandonment. Where necessary, we work with the relevant agencies and animal welfare groups on these cases. AVS/NParks takes enforcement action against anyone who has committed an act of animal cruelty.

Any owner found guilty for failure in duty of care is liable to a maximum fine of \$10,000 and/or 12 months' jail term for first convictions. Individuals who commit an act of animal cruelty are liable to a maximum fine of \$15,000 and/or 18 months' jail term for first conviction.

Feedback and Enquiry Form

Please choose the relevant feedback form

Parks, Greenery and
Plant Feedback

Animal Related
Feedback

The International Union for Conservation of Nature (IUCN)

Convention on International Trade in Endangered Species of
Wild Fauna and Flora (CITES)



Protected Species

Some of these marine wildlife species can be found in our local waters. They are protected under the Wildlife Act and Convention on the International Trade in Endangered Species of Wild Fauna and Flora (CITES). If caught, do release them promptly.

These animals are important to our ecosystem. Please play your part and help to conserve our native biodiversity.

Certain marine species found in our waters are protected under the Wildlife Act and CITES. It is illegal to import, take, trap, keep, kill and sell protected wildlife species.

Anglers can play their part to help with the conservation of these protected species by releasing them promptly if caught. Any individual found to have violated the laws shall face the following penalties:

- A fine up to S\$50,000; and/or
- Imprisonment for up to two years.

How can you be involved?

Do not consume or purchase illegal wildlife products, especially when overseas.

If you are buying CITES endangered species parts and products, please ensure that the shop has a valid CITES permit, and for the shop to handover the CITES permit to you when you purchase it.

The demand for wildlife products drives supply and fuels the illegal wildlife trade. Responsible consumption will reduce the demand for endangered species.

If you spot any occurrences of illegal wildlife trade, or ownership of endangered or wild species and their parts, you may contact NParks using the [online feedback form](#) or call 1800-476-1600. Information shared will be kept strictly confidential.

Contact NParks at 1800-471-7300 to make a report if you see or is aware of such an illegal activity taking place

Chewing Gum is BANNED

A ban on the sale, import and manufacture of chewing gum in Singapore took effect on 3 January 1992, best to leave your gum at home

1



2 Smoking Provision

You can only light up at designated points/areas

It is an offence for a person to smoke in smoking prohibited areas listed under the Smoking (Prohibition in Certain Places) Regulations 2018.



4

DRUG FREE Nation

Even small amounts of drugs can result in harsh prosecution. Getting caught with larger amounts of drugs can result in extremely strict punishments, which apply to both locals and foreigners. Do not attempt to bring any illegal controlled substances into Singapore.

SOME OF THE LAWS IN SINGAPORE

MRT Rules & Regulations

Please follow strictly!

5

Some of the Mass Rapid Transit (MRT) rules in Singapore. No Smoking, No eating and drinking, No flammable goods and most importantly NO DURIANS!

Psst, although we highly recommend you to try this exotic fruit!

 No smoking Fine \$1000	 No eating and drinking Fine \$500
 No flammable goods Fine \$5000	 No durians Fine \$5000

3

NO Jaywalking

In Singapore, the offence of Jaywalking is committed if one crosses a motor traffic road within 50 meters of a designated crossing or walking on a road that is not meant for pedestrian traffic (expressway)



Proper Usage Sunscreen

Sunscreen

While protecting your skin from harmful UV rays is essential, many conventional sunscreens contain chemicals like oxybenzone and octinoxate.

These chemicals, when washed off in the water, pose a significant threat to marine life, especially coral reefs. Research suggests they can contribute to coral bleaching, affecting the health and biodiversity of our underwater ecosystems.



What You Can Do

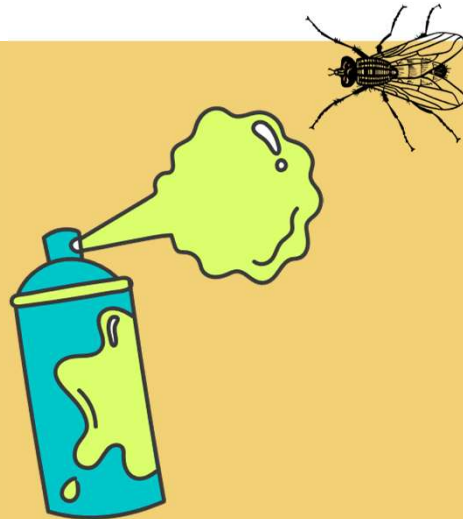
- Choose Eco-Friendly Alternatives: Opt for sunscreen and insect repellent products labeled as "reef-safe" or "biodegradable."
- Follow Proper Disposal Methods: Avoid washing off sunscreen or repellents directly into water bodies. Use eco-stations for proper disposal.
- Support Sustainable Resorts: Choose accommodations that use environmentally friendly pool management practices and products.

Proper Usage Insect Repellent

Insect Repellent

Insect repellents containing DEET and other chemicals can also negatively impact the environment.

When sprayed or applied, these chemicals can contaminate soil, water sources, and harm wildlife. Overuse or improper disposal can lead to long-term environmental damage.



What You Can Do

Natural and Biodegradable Options: Look for insect repellents made from natural ingredients like essential oils (citronella, eucalyptus) or those labeled as biodegradable and eco-friendly.

Protective Clothing: Utilize clothing that covers exposed skin areas to reduce reliance on repellents.

Application Methods: Apply repellent sparingly and according to the manufacturer's instructions. Avoid overuse and excessive spraying.

Our Sustainability Policy

Our hotel is committed to promoting sustainable tourism practices that benefit our guests, employees, the local community, and the environment. We recognize the importance of reducing our ecological footprint, preserving cultural heritage, and contributing positively to the destinations where we operate. This policy outlines our commitment to global sustainable tourism principles.





Our Sustainability Policy

We are strongly committed to:

1. Environmental Stewardship:
 - We will implement energy-efficient measures, reduce water consumption, and minimize waste generation.
 - We will invest in renewable energy sources and eco-friendly technologies wherever feasible.
 - We will educate our staff and guests on responsible resource usage and conservation.
 - We will prioritize the protection and conservation of natural ecosystems, including wildlife, forests, oceans, and water resources.
2. Cultural Preservation:
 - We respects and supports local customs, traditions, and cultural heritage.
 - We will Encourage tourism that promotes cultural exchange and understanding.
 - We will ensure our staff is trained to interact with guests in a culturally sensitive manner.



Our Sustainability Policy

3. Community Engagement:
 - We will engage with and contribute to the well-being of the local community.
 - We will source locally-produced goods and services to support the local economy.
 - We will establish partnerships with local charities and non-profits to address community needs.
4. Employee Welfare:
 - Our employees are our greatest asset. We will provide fair wages, safe working conditions, and opportunities for growth.
 - We will promote employee training in sustainability and responsible tourism practices.
 - We will foster a diverse and inclusive work environment.
5. Guest Education:
 - We will provide information to guests about our sustainability initiatives and encourage responsible travel behavior.
 - We will offer options for guests to participate in sustainable practices during their stay.
6. Waste Reduction and Recycling:
 - We will minimize waste through recycling, composting, and waste reduction programs.
 - We will reduce single-use plastics and promote reusable alternatives.



Our Sustainability Policy

7. Transportation and Accessibility:
 - We will encourage guests to use eco-friendly transportation options.
 - We will provide information on public transportation.
8. Sustainable Sourcing:
 - We will source sustainable and locally produced products for our operations, including food and amenities.
 - We will prioritize suppliers that share our commitment to sustainability.
9. Legal Requirements and Health & Safety:
 - We will comply with legal requirements in terms of water conservation, health, safety, labor and environmental aspects, acquisition by the organization of land and water rights and of property.
 - We will prevent ill health conditions at work, and unsafe conditions / act.
 - We will control high risk activities and are committed to increase awareness on health and safety consciousness.
 - We will ensure the systematic management of health and safety throughout all workplaces.
 - We will develop contingency plans for handling crises that can impact tourism, such as natural disasters or global health emergencies. Ensure that recovery efforts prioritize sustainability and resilience.



Our Sustainability Policy

10. Social Responsibility:

- We will support action against exploitation / harassment of vulnerable groups and child sex tourism.

11. Monitoring and Compliance:

- We will establish a monitoring and reporting system to ensure the implementation of this sustainable tourism policy. Regular audits and assessments will be conducted to measure our progress.

12. Continuous Improvement:

- We are committed to ongoing improvement in our sustainable tourism practices. Feedback from guests, employees, and local stakeholders will be actively sought and integrated into our policies and procedures.

Our hotel will ensure that this Global Sustainable Tourism Policy and all procedures relating to it are communicated, understood and implemented by all company employees, the interested parties and relevant communities. All employees will perform their jobs properly, in accordance with this policy and established practices. The policy shall be reviewed and updated when necessary.

Tips for Energy Saving

- Adjust thermostats to a reasonable temperature
- Turn off all equipment when not used.
- Keep doors and windows shut when the heating/cooling system is on.
- Turn-off exterior lighting during the daylight hours.
- Shut down all computers completely at end of day (back office); do not leave them on stand-by.
- Replace old equipment at the end of their life span for more efficient ones.
- Ensure main entrance door is kept closed to avoid loss of heat or cooling.
- When servicing rooms, open curtains to take advantage of natural daylight while working.
Ensure all lights and televisions are switched off when leaving the room.
- Run only full loads to minimise frequency of laundry operation.
- Only run dishwashers on full load.
- Turn off lights and ventilation/air-conditioning when laundry not in use.



Tips for Water Saving



- Report toilet or water tap leaking immediately.
- Avoid leaving taps running continuously
- Run only full loads to minimise frequency of laundry operation.
- Only run dishwashers on full load.
- Conduct regular maintenance checks to prevent leaks for swimming pool.
- Only change the bed linen when the guests place the earth card on the bed (for continuous staying guests).
- Do not change the towels when guests hang them on the towel rails (based onn our earth card instruction)

Tips for Waste Reduction



- Serve toiletries and food packaging with refillable dispensers.
- Reduce the use of single-use plastic.
- Reduce food waste.
- Bulk buying cleaning products and refilling spray bottles and containers.
- Bulk buy ingredients to reduce packaging waste
- Consider donating old items to charity.
- Throw any glass, plastic, packaging, paper, and cardboard into recycling bin.
- Tinned food or fresh ingredients close to expiry can be donated to local food banks.
- Some animal shelters may accept leftovers as feed for their animals or composting.
- Work with products that come in recyclable or minimal packaging and from sustainable sources.
- Using local suppliers reduces transportation costs and the amount of fuel and emissions.
- Print essentials only.
- Make paperless notes.
- Avoid flyers and posters.
- Use paper recycling bins.



Our Sustainable Purchasing Policy

Our hotel is committed to promoting sustainable tourism and responsible business practices. We recognize our responsibility to minimize the environmental and social impact of our operations, including our procurement activities. This Sustainable Purchasing Policy outlines our commitment to sustainable purchasing and our expectations for suppliers.

We aim to reduce the environmental footprint of our operations by sourcing products and services that are environmentally friendly, energy-efficient, and minimize waste.

We are committed to respecting human rights, promoting fair labor practices, and supporting local communities through our purchasing decisions.

We seek to maintain a financially responsible approach to procurement while supporting local and sustainable businesses.



Our Sustainable Purchasing Policy

We are strongly committed to:

1. **Local Sourcing:** Whenever possible, we prioritize sourcing products and services from local suppliers to support the local economy and reduce transportation emissions.
2. **Sustainability Certification:** We give preference to suppliers and products that hold recognized sustainability certifications, such as Fair Trade, FSC (Forest Stewardship Council), or organic certifications. Where certified products and suppliers are not available, consideration is given to origin and methods of growing or production.
3. **Energy and Water Efficiency:** We encourage suppliers to provide products that are energy and water efficient.
4. **Waste Reduction:** We strive to minimize packaging waste and single-use plastics in our procurement decisions. Suppliers are encouraged to use eco-friendly packaging.
5. **Fair Labor Practices:** We require our suppliers to adhere to fair labor practices and treat their employees with dignity and respect. We support businesses that provide fair wages and safe working conditions.
6. **3 R Goods:** we favour reusable, returnable and recycled goods.
7. **Unnecessary packaging:** (especially from plastic) is avoided, with buying in bulk as appropriate.
8. **We will ensure threatened species are not used or sold.**



Our Sustainable Purchasing Policy

Supplier Expectations

Suppliers doing business with our hotel are expected to adhere to the following principles:

1. Comply with all applicable laws and regulations related to environmental protection, labor, and human rights.
2. Provide accurate information regarding the environmental and social impact of their products and services.
3. Collaborate with our hotel to continually improve sustainability efforts in the supply chain.
4. Support the hotel's efforts to reduce waste, conserve resources, and promote responsible business practices.

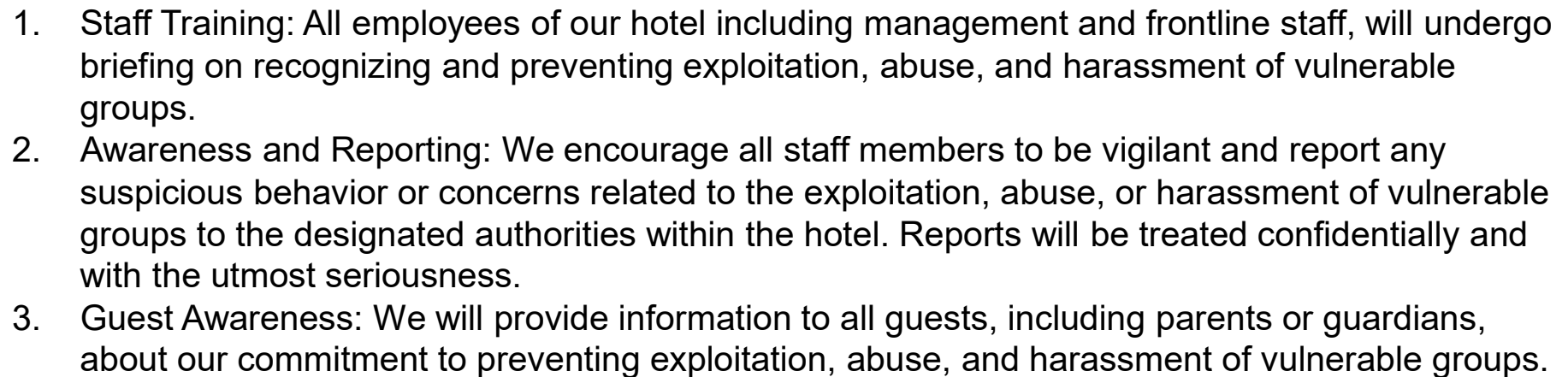
Our hotel will review and update this Sustainable Purchasing Policy when necessary to ensure its continued relevance and effectiveness in promoting sustainable tourism and responsible business practices.

This policy will be communicated to all employees and suppliers, and compliance will be monitored to ensure that our hotel maintains its commitment to sustainability in all aspects of procurement.

Prevention of Exploitation, Abuse and Harassment of Vulnerable Groups Policy

Our hotel is committed to providing a safe and welcoming environment for all guests and staff, including vulnerable groups such as children, persons with disabilities, elderly individuals and any other individuals who may be at risk of exploitation, abuse, or harassment. We are dedicated to preventing and addressing any incidents involving vulnerable groups within our premises.





Prevention of Exploitation, Abuse and Harassment of Vulnerable Groups Policy

Communication:

1. Guests: We will communicate our commitment to preventing exploitation, abuse, and harassment of vulnerable groups during the check-in process.
2. Staff: We will ensure that all staff members are aware of this policy and briefed to the prevention measures and reporting procedures.

This policy will be reviewed when necessary to ensure its effectiveness. Any updates or changes will be communicated to all staff.

If you have any questions or concerns related to this policy, please contact +65 6678 8320.



PROTECTING CHILDREN IN TOURISM



What can tourists do?

Hotel Staff Contact:

Report any concerns regarding child safety or suspicious activities to hotel staff or management immediately.



Local Authorities:

Contact local authorities or child protection organizations if you suspect any form of child exploitation or endangerment.

Sexual Assault Care Centre (SACC)
(<https://sacc.aware.org.sg>)
1800 777 0000

MSF Consolidated Helpline
1800-111-2222
(<https://www.msf.gov.sg/contact-us-feedback>)

Tinkle Friend Helpline (for Child Abuse) 1800-274-4788
(<https://www.tinklefriend.sg/>)

SEEK FOR YOUR SUPPORT

